

**Document 1**

1. According to this passage, what was the specific purpose of this executive order?

---

---

---

---

---

Part I

**INVESTIGATION OF APPLICANTS**

There shall be a loyalty investigation of every person entering the civilian employment of any department or agency of the executive branch of the Federal Government. . . .

Part V

**STANDARDS [for Employment]**

Activities and associations of an applicant or employee which may be considered in connection with the determination of disloyalty may include one or more of the following:

Membership in, affiliation with or sympathetic association with any foreign or domestic organization, association, movement, group or combination of persons, designated by the Attorney General as totalitarian, fascist, communist, or subversive, or as having adopted a policy of advocating or approving the commission of acts of force or violence to deny other persons their rights under the Constitution of the United States, or as seeking to alter the form of government of the United States by unconstitutional means. . . .

— Executive Order 9835, President Harry Truman, 1947

**Document 2**

2. What criticism was the cartoonist making of the House Committee in Un-American Activities?

---

---

---



**Document 3**

<b>The Most Important Problem Facing the United States 1953-1962</b>	
1953	Korean War
1954	Threat of war
1955	Working out a peace
1956	Threat of war
1957	Keeping out of war
1958	Economic conditions
1959	Keeping peace
1960	Relations with the Soviet Union
1961	Prices and inflation
1962	War, peace, and international tensions

Source: The Gallup Poll of Public Opinion, Vols. 2 and 3, Random House (adapted)

3. According to these Gallup Poll results, what was the dominant problem in the United States between 1953 and 1962?

---

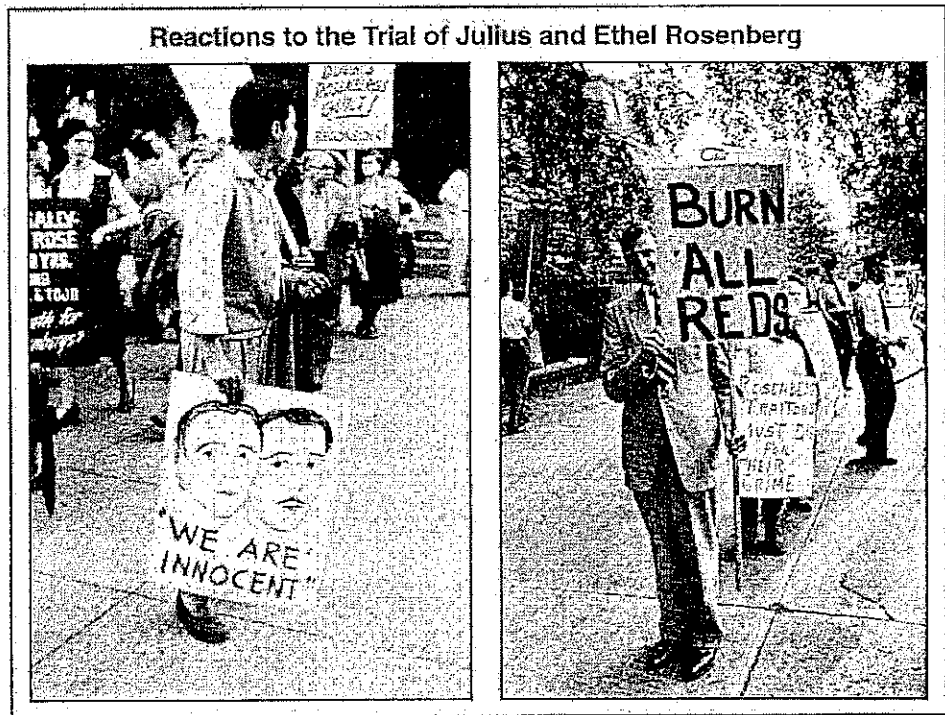
---

---

---

**Document 4**

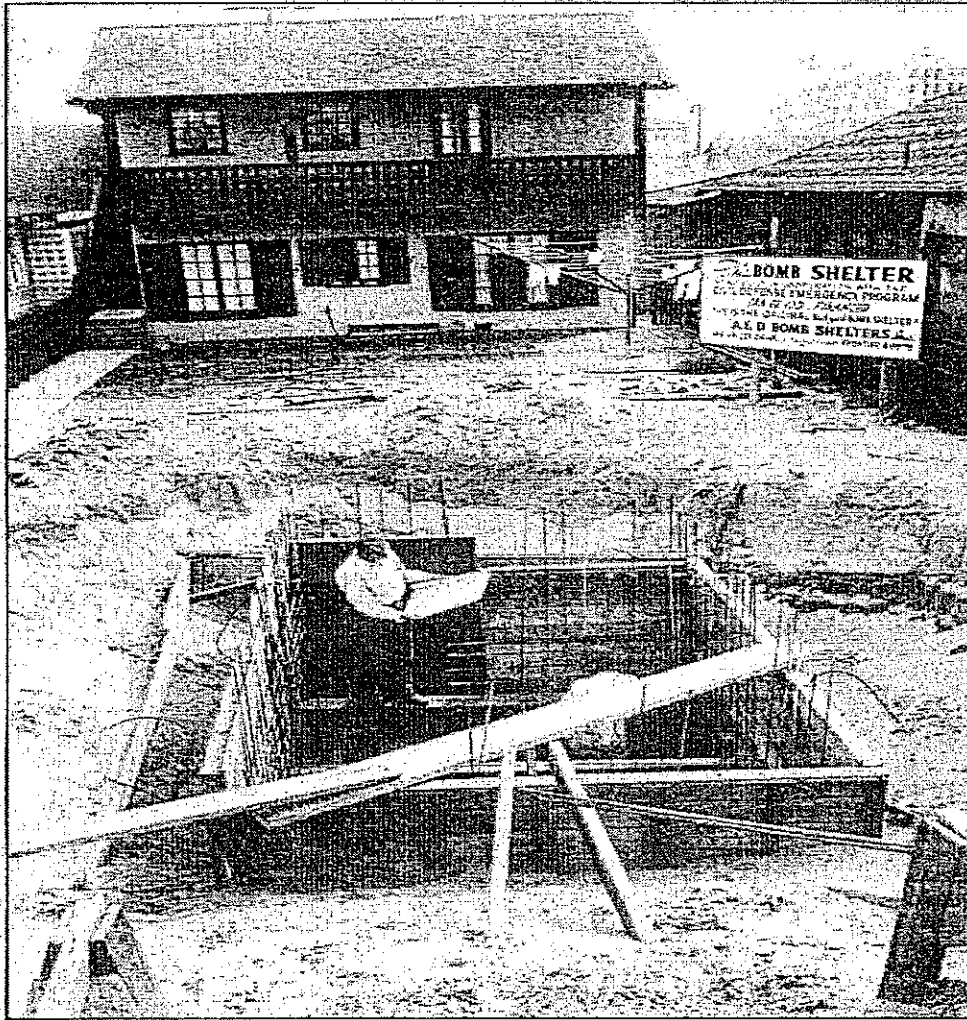
4. According to these photographs, what impact did the Rosenberg trial have on American society?



Source: Elliot Erwitt, Magnum Photos

---

Document 5



**Building a Bomb Shelter**

Source: Loomis Dean, *Life Magazine*, 1951

5. What does this picture ["Building a Bomb Shelter"] show about the effect of the Cold War on American society?

Document 6

Sputnik's Effect on Education  
in the United States



Source: Herblock, *The Washington Post*, 1957(adapted)

6. How did the cartoonist believe education in the United States was affected by the launching of the Soviet satellite, *Sputnik*?

---

---

---

---

---

---

---

---

Document 7

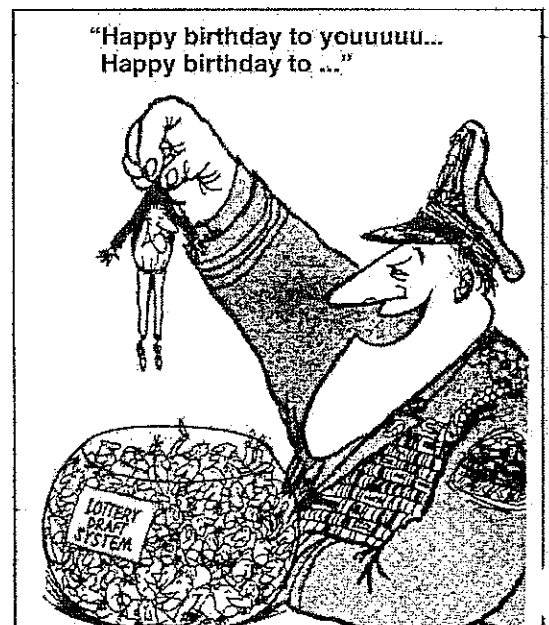
7. According to the cartoonist, how did the Cold War affect American males who were approaching their eighteenth birthday?

---

---

---

---



---

---

Document 8

8. According to the graph, how did the Cold War affect the United States defense budget?

---

---

---

---

---

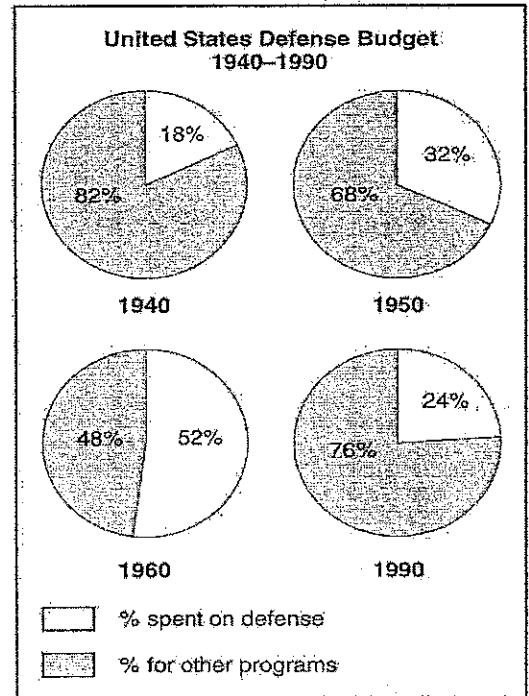
---

---

---

---

---



— United States Budget, Historical Tables  
Source: <http://w3.access.gpo.gov/usbudget/fy2000> (adapted)

